

Yourself. Others. Community.

Select Respect: Relationship Violence, Sexual Assault and Stalking Prevention at The College at Brockport

Sara Gleisle MS, CHES
Assistant Director

Center for Select Respect ▪ Prevention and Outreach Services
Hazen Center for Integrated Care
The College at Brockport, State University of New York

Tell me about you!

- Where do you work, what do you do
- Are you involved with these topics at all? (education, awareness, response, policy)

Today's Plan!

- Briefly explore relationship violence, sexual assault and stalking prevention on campus.
- Understand capacity building for a sexual violence prevention center on campus.
- Illustrate the programming goals of Select Respect based on the Social Ecological Model of intervention related to sexual violence prevention on a college campus.
 - Explore EagleCHECK, our bystander intervention program.
- Discuss new opportunities for violence prevention, gender equity, and male engagement.

The College at Brockport

State University of New York

- Rural, Victorian-era village of 8,100 residents on the Erie Canal
- 46 miles from Buffalo, 20 miles from Rochester
- Undergraduate enrollment: Roughly 8,000
Graduate enrollment: Roughly 1,000
 - 91% freshmen live on campus (1st & 2nd year residency requirement)
 - 63% are commuters (426 commuters in the village)
 - 18% of students are older than 25

(Fall 2015 data)

Brockport, New York



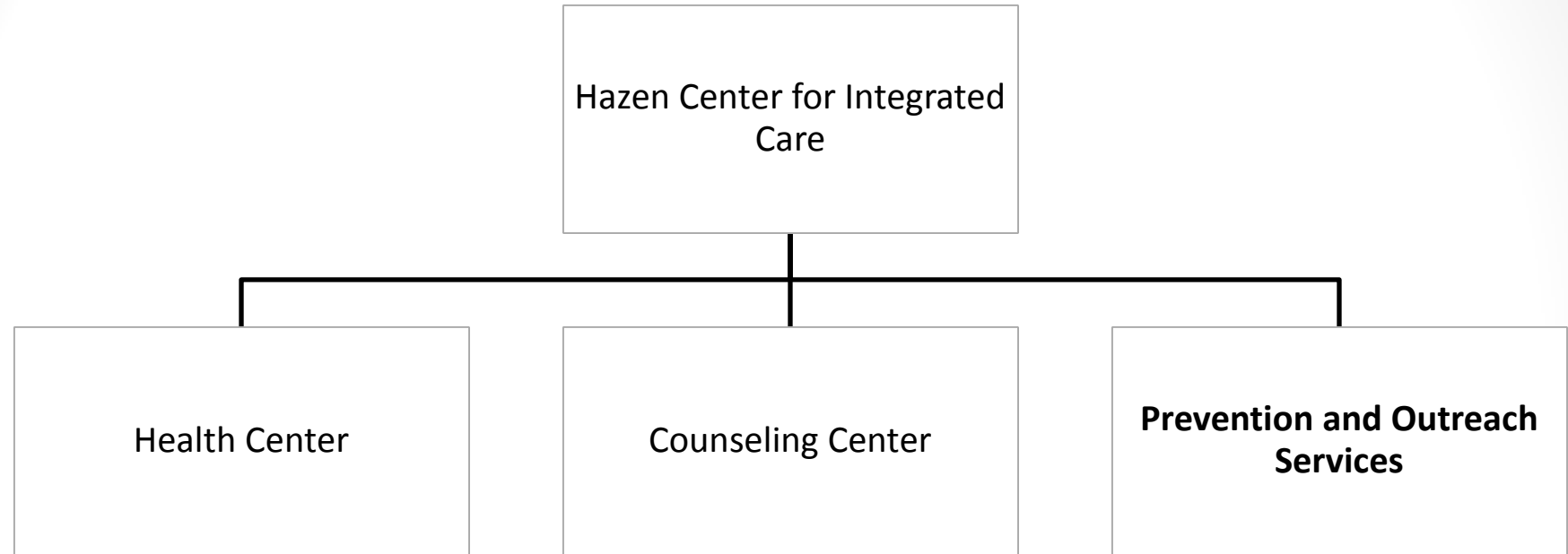
Hazen Center for Integrated Care

Hazen Center for Integrated
Care

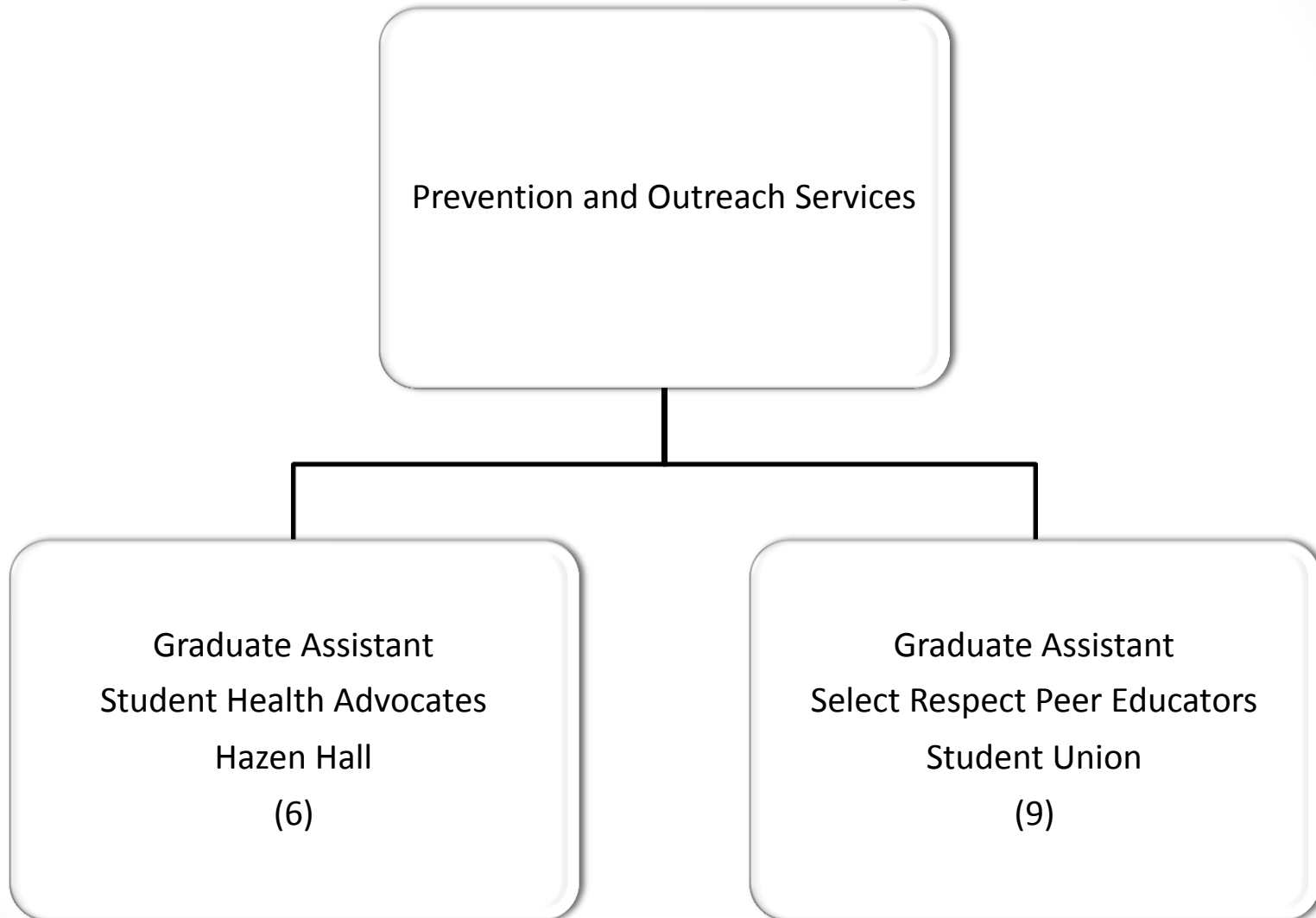
Health Center

Counseling Center

**Prevention and Outreach
Services**



Hazen Center for Integrated Care



Preliminary Steps – The History

- 2010 – Data review from the CDC’s National Intimate Partner and Sexual Violence Survey
- Fall 2010- EagleCHECK Bystander Intervention Program



The CDC's National Intimate Partner and Sexual Violence Survey (2010)

Nearly 1 in 5 women and 1 in 71 men in the U.S. have **been raped** at sometime in their lives.

The majority of both female and male victims of rape **knew their perpetrators.**

Approximately **1 in 4 women and nearly 1 in 7 men** have experienced severe physical violence by an intimate partner.

Most female victims of completed rape experience their first rape **before age of 25** and almost half experience their first completed rape **before age 18.**

More than half of female victims and more than 1/3 of males victims were stalked **before age 25.**

More than **1/3** of U.S. women and **1/4** of U.S. men have **experienced physical violence, rape, and/or stalking by an intimate partner** at some point in their lifetime.

What We Were Doing: EagleCHECK

Bystander Intervention

- An **EagleCHECK** is an **intentional decision** that an individual or group makes to **intervene** in a situation that has the potential to be risky, dangerous, unhealthy, or an emergency.



EagleCHECK

Learning Outcomes

- Discuss the roles that bystanders play in alcohol poisoning and sexual assault prevention, interventions and response
- Demonstrate appropriate and effective bystander education skills
- Deconstruct myths related to high-risk drinking and sexual assault on college campuses
- Think critically about the link between high-risk drinking and sexual assault
- Describe campus and community services related to alcohol use, substance use and sexual assault

Assessing EagleCHECK

Binge Drinking (2-Week Prevalence, CORE Survey)

2001	2002	2003	2004	2005	2008	2009	2010	2011	2012	2013
65.9%	60.6%	55.3%	58.6%	57.9%	49.2%	45.4%	43.9%	42.9%	42.7%	43.2%

Student Actively Involved in AOD Prevention (CORE Survey)

2001	2002	2003	2004	2005	2008	2009	2010	2011	2012	2013
.9%	1.4%	1.7%	3.3%	3.1%	9.3%	15%	16.1%	16.3%	16.1%	15.9%

EagleCHECK to Select Respect

Capacity Building

- 2011-2012 Sexual Assault Prevention Education Task Force
 - Inventory of programs
 - EagleCHECK working!
 - Review of prevention strategies/recommendations
 - Focus on collaboration
- Fall 2012 Select Respect Task Force & Guiding Documents
 - Graduate Assistant position for Violence and Sexual Assault Prevention coordinating campus wide prevention efforts
- Fall 2012 – Female undergraduate student death related to domestic violence
- Spring 2013 – Center for Select Respect opens

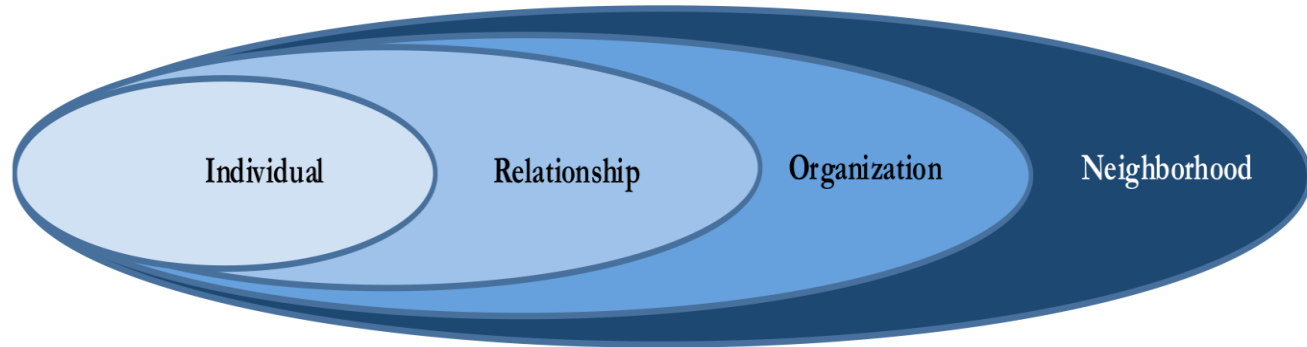


- Great things are done by a series of small things brought together

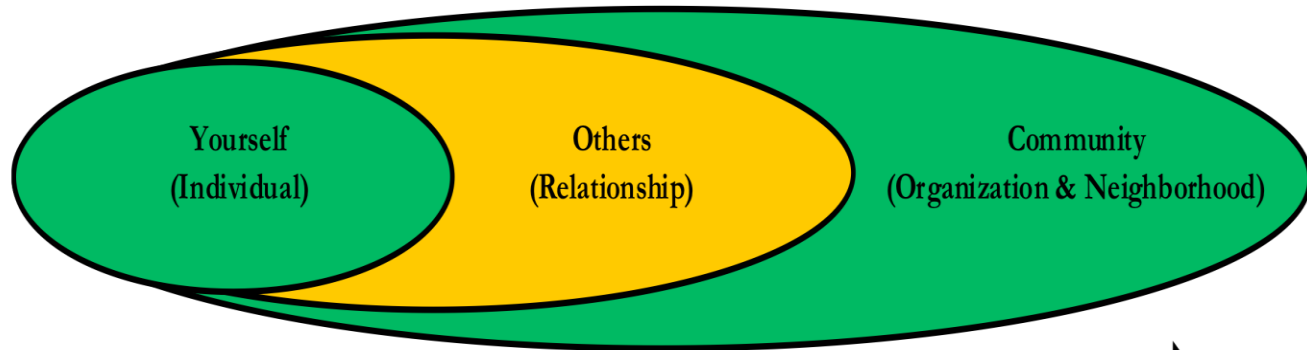
Using the Social Ecological Model

Comprehensive Approach to Relationship Violence, Sexual Violence, and Stalking Prevention

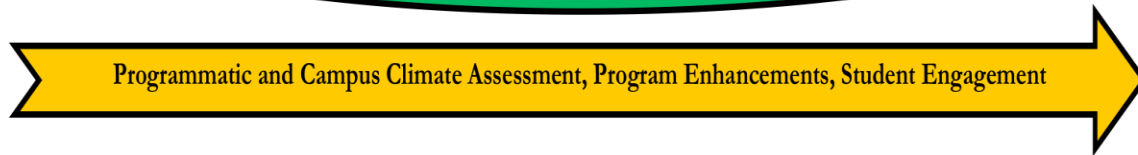
Center for
Disease Control
(CDC) Social
Ecological Model



The College at
Brockport's
Implementation of
Social Ecological
Model –
Select Respect



Programmatic and Campus Climate Assessment, Program Enhancements, Student Engagement



Select Respect

Guiding Principles

- A **“culture of respect”** contributes to a safe learning and living environment that promotes personal development, healthy interpersonal relationships, accountability, and community engagement.
- **Primary prevention** of intimate partner violence, sexual violence, and stalking **involves all genders**.
- **Alcohol and other drug use** and intimate partner violence, sexual assault, and stalking are **commonly**, but not always, linked and should be addressed concurrently.
- There is a strong link between intimate partner violence, sexual violence, stalking and sexism, as well as **other forms of oppression**.

Select Respect

Evidenced Based and Recommended Strategies

- Promote healthy, respectful relationships among students (CDC, ACHA)
- Address beliefs, attitudes, and messages that condone, encourage, or facilitate intimate partner violence, sexual violence, and stalking (ACHA, CDC, OSHS, & OVW)
- Bystander intervention education (CDC, OSHS, & OVW)
- Increase use of protective factors and decrease influence of risk factors for victimization and perpetration (ACHA, CDC, OSHA)
- Engage men in ending violence against women (ACHA, CDC, OSHS, OVW)
- Engage social media and mobile technology (CDC – Recommendation)

Select Respect

Evidenced Based and Recommended Strategies

- Beyond Compliance, Addressing Sexual Violence in Higher Education

Sexual violence prevention requires a holistic approach (American College Health Association, 2008; Center for Disease Control, 2015). A holistic and comprehensive approach preventing sexual violence includes addressing the following learning

Goals:

- 1. consent, policy, and resources,
- 2. healthy relationships and sexuality,
- 3. roots of sexual violence, and
- 4. empowering actions.

Effective pedagogy to convey these learning goals includes content and delivery that is:

- 1. sequenced developmentally
- 2. integrated throughout the student experience
- 3. presented in varying formats
- 4. messaged consistently and tailored for specific communities, and
- 5. inclusive of multiple and intersecting identities.

Discussion Question

Building Collaborations

- Who can you/who are you collaborating with on campus?
- Where have you met resistance?



The Team!

Making it all possible!



- Coordinator
- Graduate Assistant
- 9 Select Respect Peer Educators
- 1 Intern
- Volunteers/Service Learning Students

Select Respect Programs

Prevention and Education Throughout the Student Lifecycle

The Select Respect program, rooted in the social ecological model, capitalizes on the synergistic effects of appropriately timed interventions, the use of multiple evidence-based strategies, and the engagement of the entire campus community.



Pre-Arrival
Programming

Arrival
Programming

On-Going
Programming

Operation Green and Gold

Campus Wide Program

OPERATION
GREEN & GOLD

Brockport Students Ending Domestic Violence

Operation Green and Gold

Digging Deeper and Considering EagleCHECK

- Ending sexist jokes
- Checking in on my friends
- Listening
- Being a role model
- Being an ally
- Educating others
- Respecting others
- Speaking out
- Remember that silence is affirming
- Protecting friends

Operation Green and Gold

Locations

- Residence Halls
- Dining Halls
- Union
- SERC (Fitness Center)
- Tuttle (Athletic Buildings)
- Academic Buildings
- Campus-wide events
- MetroCenter Campus (downtown Rochester location)

Operation Green and Gold

Social Media Reach

- On our Facebook OGG Album/OGG pictures
 - 760 pictures on Facebook
 - 1,046 Total album/picture “likes”
 - Over 400 “tweetable statements”
 - Twitter @Ctr4SR

#OperationGreenandGold

#SelectRespect

Facebook.com/BrockportHealth





“I will contribute to ending domestic violence by being an example to others. It is important to end this because there is no real reason for someone to be violent to anyone. Men and women should collaborate to end domestic violence because it affects us all in a way.”

-Sean P.

OPERATION
GREEN & GOLD

Brockport Students Ending Domestic Violence



“Ending domestic violence is a collaborative process. Once we all work together we can end domestic violence!” -Charice P.

OPERATION
GREEN & GOLD

Brockport Students Ending Domestic Violence

Operation Green and Gold

On Twitter @Ctr4SR



Select Respect @Ctr4SR

25 Sep

"I will show kindness and respect to all women...peace for all people is something to strive for" -Ben #OperationGreenandGold #SelectRespect

Expand



Select Respect @Ctr4SR

24 Sep

Cody pledges to end violence against women "by swearing I never would and by sticking up for and protecting women" #selectrespect

Expand



Select Respect @Ctr4SR

23 Sep

Ryan says "I don't respect my people who think domestic violence is ok" #OperationGreenandGold #brockport #selectrespect

Expand

← Reply 🗑 Delete ★ Favorite ⋮ More



Select Respect @Ctr4SR

19 Sep

"I vow to show everybody the respect they deserve as human beings." - Phillip #SelectRespect #OperationGreenandGold #Brockport

Expand

Operation Green and Gold

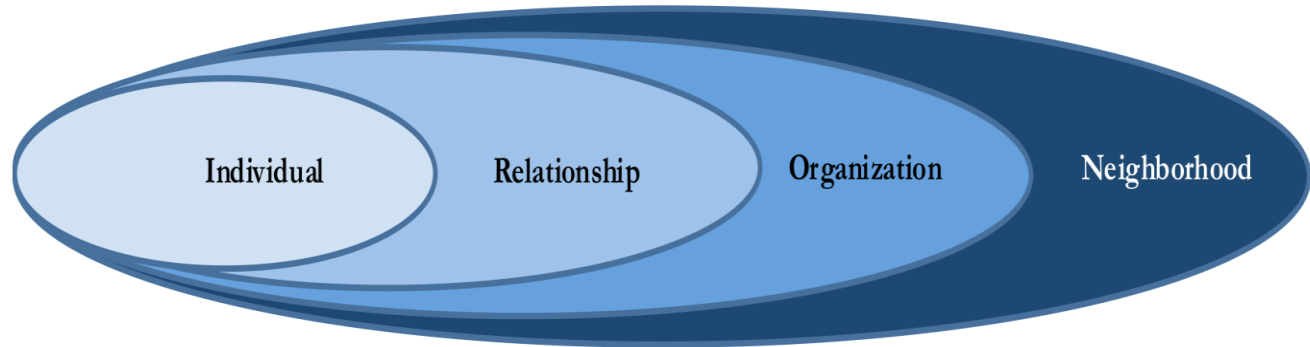
Implications

- **Empowering** students
- **Awareness** to campus → Installations in the Union and Residence Halls
- Starting **conversations**
- All genders working **together**
- **Response** from faculty and staff

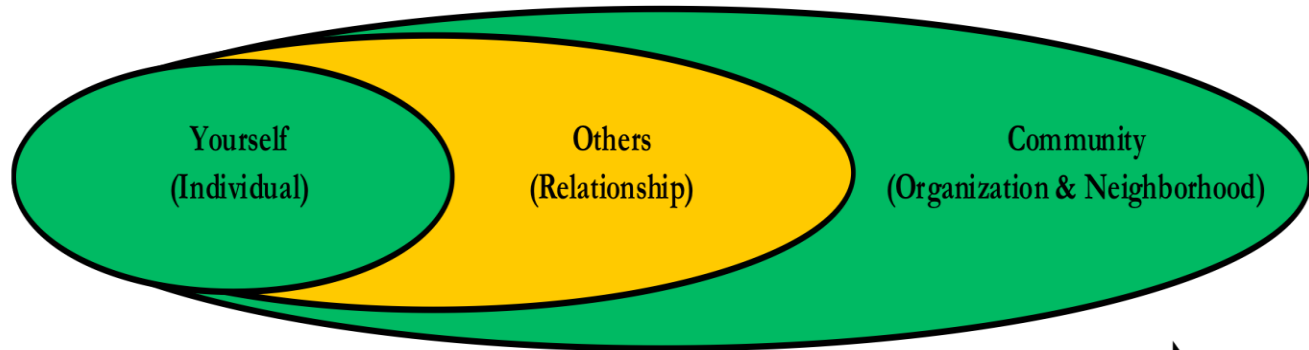
Using the Social Ecological Model

Comprehensive Approach to Relationship Violence, Sexual Violence, and Stalking Prevention

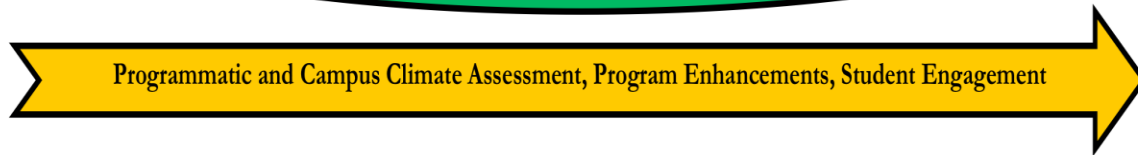
Center for
Disease Control
(CDC) Social
Ecological Model



The College at
Brockport's
Implementation of
Social Ecological
Model –
Select Respect



Programmatic and Campus Climate Assessment, Program Enhancements, Student Engagement



WHO
NEEDS
FEMINISM?

I need feminism because...

*It provides an outlet
to express equality
between men and
women.*





J
a
c
k
s
o
n



K
a
t
z



WHO NEEDS

FEMINISM?



iRespect

OPERATION
GREEN & GOLD
Brockport Students Ending Relationship Violence



Walk a Mile In Her Shoes



Walk-A-Mile in Her Shoes

Campus Wide Program



Walk a Mile in Her Shoes

- International Men's March to stop rape, sexual assault and gender violence
- Campus mall for visibility
- Social justice





Sexual Assault Awareness Month

CALENDAR OF EVENTS 2015

- | | | | |
|---------------------------------------------------------------------------------------------|-------------------------------------------------------------------------------------------|---------------------------------------------------------------------------------------------------------------------|----------------------------------------------------------------------------------------------------------------|
| April 1
<i>"Who Needs Feminism"</i>
Union Main Lounge
11:30am-1:00pm | April 13
<i>"The Line Documentary"</i>
Union 220
9:30pm-10:30pm | April 16
<i>"The Hunting Ground"</i>
Edwards 100
6:30pm | April 23
<i>"Healing Yoga"</i>
Hartwell Hall
7:30pm |
| April 7
<i>"I Can, We Can"</i>
Union Main Lounge
1:00pm-2:30pm | April 14
<i>"Clothesline Project"</i>
Union Ballroom
9:30am-7:00pm | April 17
<i>"Sunshine Breakfast"</i>
Union Gallery
9:00am-10:30am | April 28
<i>"Living for Today"</i>
<i>Erin Merryn Book Discussion</i>
Union B124
7pm |
| April 9
<i>"50 Shades of What?!"</i>
Union B129
12:30pm-1:30pm | April 15
<i>"Clothesline Project"</i>
Union Ballroom
9:30am-5:00pm | April 21
<i>"Self-defense class"</i>
Tentative Union Ballroom
8:15pm | April 29
<i>"Denim Day"</i>
Union Main Lounge
12:30-2:30 |
| April 15
<i>"Bandana Project"</i>
Union Main Lounge
1:15-3:15 | April 22
<i>"Quilt Squares"</i>
Union Main Lounge
11:30am | April 30
<i>"Trigger Warning"</i>
<i>sponsored by the Office of Diversity</i>
Union Ballroom | |



SEXUAL ASSAULT AWARENESS MONTH

April 13-17, 2015

April 13
“The Line Documentary”
Union 220
9:30pm-10:30pm

April 15
“Bandana Project”
Union Main Lounge
1:15-3:15

April 14
“Clothesline Project”
Union Ballroom
9:30am-7:00pm

April 16
“The Hunting Ground”
Edwards 100
6:30pm

April 15
“Clothesline Project”
Union Ballroom
9:30am-5:00pm

April 17
“Sunshine Breakfast”
Union Gallery
9:00am-10:30am

 CENTER FOR
SELECT RESPECT
THE COLLEGE AT BROCKPORT
YOURSELF. **OTHERS.** COMMUNITY.

The College at Brockport
**Prevention
& Outreach
Services**
Hazen Center for Integrated Care



The College at
BROCKPORT
STATE UNIVERSITY OF NEW YORK

Denim Day

- <https://vimeo.com/125952551?from=outro-local>



Residence Hall Programs

- The development and implementation of **residence hall programs** on related topics supports knowledge acquisition and skill development related to healthy relationships, communication, and health and safety throughout the student life cycle.
- Student Learning Outcomes/Assessment
- Social Justice Components



iRespect



The Purple Run 4(K) Change

- 410 students, faculty, and staff 2015
- Thursday of last week of classes (traditionally high-risk drinking evening)
- Reached traditionally hard to reach populations

THEY RAN FOR A CHANGE. WILL YOU?

RUN TO MAKE A CHANGE FOR DOMESTIC VIOLENCE APRIL 5TH, 2014. REGISTER ONLINE OR AT EVENT.



THE PURPLE RUN.

PREVENTION & OUTREACH SERVICES, THE WOMEN'S CENTER, CENTER FOR SELECT RESPECT, BROCKPORT LATE NIGHT



ARE YOU READY TO RUN 4(K) CHANGE?

5.6.2015



3RD ANNUAL PURPLE RUN AT THE COLLEGE AT BROCKPORT
TAKING STEPS TO END DOMESTIC VIOLENCE

WEDNESDAY, MAY 6TH, 2015
THE COLLEGE AT BROCKPORT UNION MALL

5PM: REGISTRATION & ACTIVITIES | 7PM: WALK, RUN, & ROLL START

REGISTER ONLINE OR AT EVENT
FREE FOR STUDENTS. \$5 FOR FACULTY, STAFF, & COMMUNITY





PRE & POST RACE ACTIVITIES

5PM-7PM

COLORING STATIONS (FACE & BODY PAINT, COLORED HAIRSPRAY)

FLOWER POT DECORATING- SPONSORED BY **RES LIFE**

INFORMATION TABLES

LIVE DJ



SPONSORED BY **CAMPUS REC**
SESSIONS AT 5:30, 6, & 6:30PM

7:45PM

POST RACE FOOD
AWARDS & RAFFLE WINNERS

WEDNESDAY, MAY 6TH, 2015
THE COLLEGE AT BROCKPORT UNION MALL





05/06/2015





05/06/2015

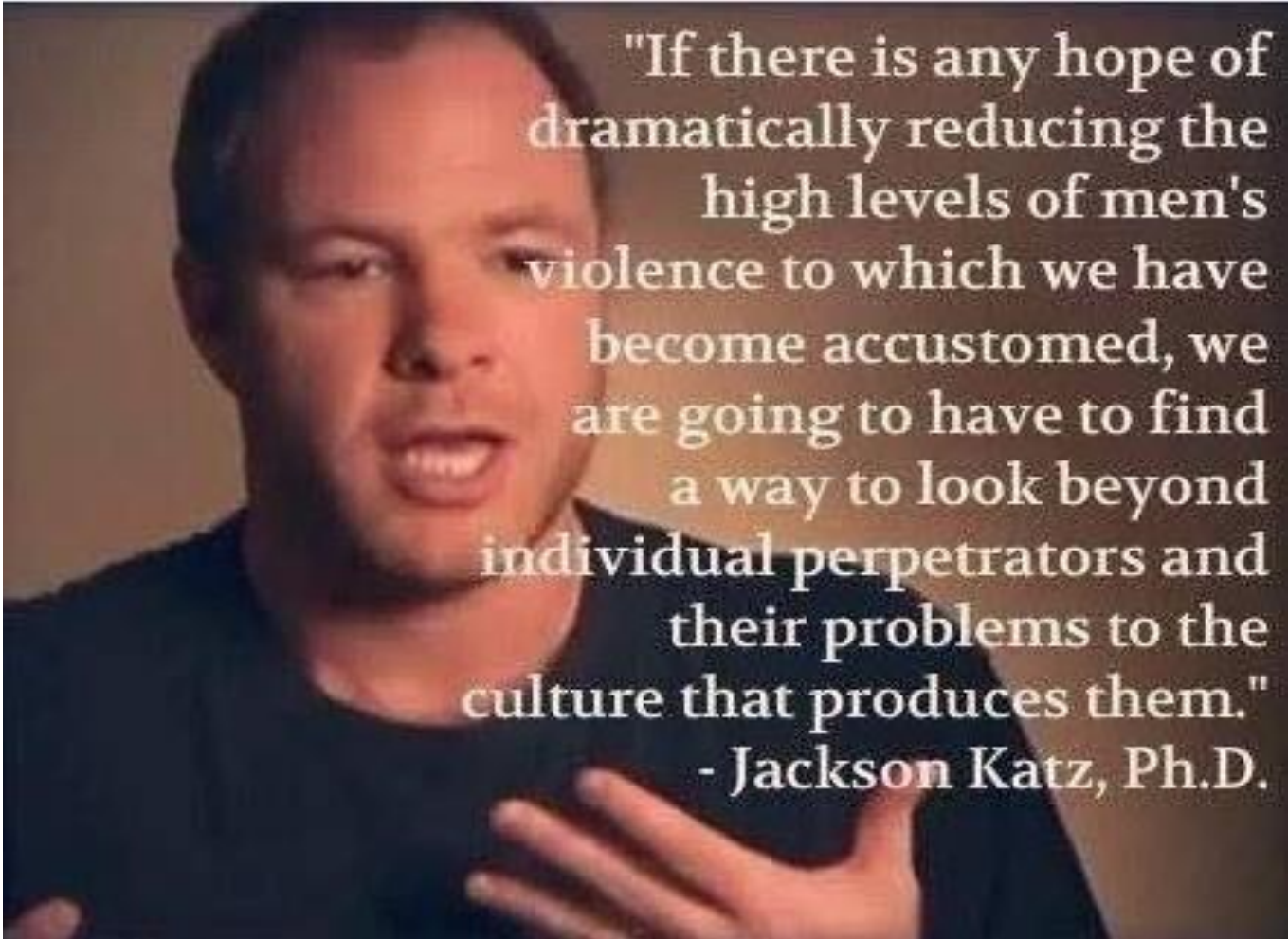


Not Asking for it

- <https://vimeo.com/110223001>

Where We're Going!



A man with short brown hair, wearing a dark blue t-shirt, is shown from the chest up. He is looking slightly to the right of the camera and has his mouth open as if speaking. His right hand is raised, with fingers spread, in a gesturing motion. The background is a plain, light-colored wall. Overlaid on the right side of the image is a quote in white text.

"If there is any hope of dramatically reducing the high levels of men's violence to which we have become accustomed, we are going to have to find a way to look beyond individual perpetrators and their problems to the culture that produces them."

- Jackson Katz, Ph.D.

**"DON'T LEAVE YOUR CUP
UNATTENDED."**



**JUST AS IMPORTANT: DON'T
ROOFIE UNATTENDED CUPS.**

Mirror Program Ultimate Wingwoman

- Similar pillars but empowerment piece versus gender? Maybe?
- Bystander intervention
- Alcohol education
- Agree disagree unsure
- Resources

Women's Wellness

Wednesdays

Every Wednesday,
12:00pm - 1:00pm, in
The Center for Select
Respect
(B124 in Student Union)

October Topics:

10/14: Finding Yourself and YOUR Hot Topics

10/21: #loveYOURbody

10/28: Mindfulness and You

Learn healthy skills and become part of a supportive
network for fellow female Brockport students!

The logo for the Center for Select Respect features a stylized 'V' shape with a checkmark inside, followed by the text 'CENTER FOR SELECT RESPECT'. Below this, it says 'THE COLLEGE AT BROCKPORT' and 'YOURSELF. OTHERS. COMMUNITY.'

CENTER FOR
SELECT RESPECT
THE COLLEGE AT BROCKPORT
YOURSELF. OTHERS. COMMUNITY.



**COME ON BARBIE
LET'S GO PARTY**



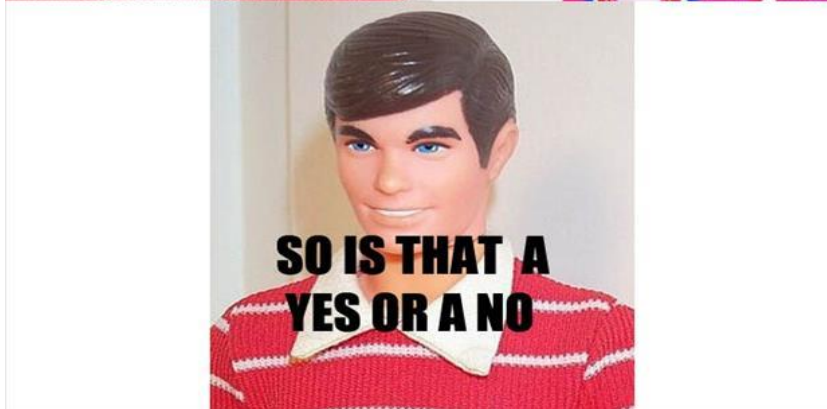
**AWW AWW AWW
YEAH**



**COME ON BARBIE
LET'S GO PARTY**



**OOH AW OOH
OOH AW OOH**



**SO IS THAT A
YES OR A NO**

Defining Affirmative Consent

1. A clear, unambiguous, knowing, informed, and voluntary agreement between all participants to engage in sexual activity.
 2. It is active, not passive.
3. Receiving consent is the responsibility of the person(s) initiating each sexual act regardless of whether person initiating the act is under the influence of drugs and/or alcohol.
4. Prior consent to any sexual act does not constitute sex to any other sexual act.
5. Once consent is withdrawn or cannot be given, sexual activity must stop. Consent may be initially given but withdrawn at any time.
6. Consent cannot be given when a person is incapacitated. Incapacitation occurs when an individual lacks the ability to fully, knowingly choose to participate in sexual activity. Incapacitation includes impairment due to drugs or alcohol (voluntary or involuntary), the lack of consciousness or being asleep, being involuntarily restrained, if any of the parties are under the age of 17, or if an individual other cannot consent.
7. Consent cannot be given when it is the result of any coercion, intimidation, force, or threat of harm.
8. The definition of consent does not vary based upon a participant's sex, sexual orientation, gender identity, or gender expression.

Assessing EagleCHECK

- Bystander intervention
- Select Respect Activity
- High risk drinking prevention
- Sexual Assault Prevention
- Scenarios



What I noticed:

We aren't necessarily assessing **SKILL**
the SKILL of bystander intervention

1. Do student feels comfortable intervening
2. Do students feel confident in their ability to intervene

An Idea

- Tier one: EagleCHECK
- Tier two: Ultimate Wingman and Ultimate Wingwoman
- Tier three: Golden EagleCHECK

A word cloud featuring various terms related to social justice, advocacy, and community support. The words are arranged in a roughly triangular shape, pointing to the right. The colors of the words include orange, green, yellow, and purple. The most prominent words are 'Social Justice' (vertical, purple), 'Healthy Relationships' (horizontal, orange), 'Advocacy' (diagonal, dark red), and 'Feminism' (diagonal, orange). Other visible words include 'Title IX', 'Justice', 'Empower', 'Brockport', 'EagleCHECK', 'Select Respect', 'Relationships', 'Help', 'Prevention', 'Equality', 'Gender', 'Respect', 'Feminism', 'Growth', 'Sexuality', 'Stalking', 'Choice', 'Hazen', 'Education', 'Victim', 'Change', 'Survivor', and 'Violence'.

Expression
Healthy Relationships
Sexuality
Education
Victim
Change
Survivor
Violence
Stalking
Choice
Hazen
Growth
Feminism
Gender
Respect
Advocacy
Equality
Prevention
Help
Relationships
Select Respect
EagleCHECK
Brockport
Empower
Justice
Title IX
Social Justice

Closing Thought

- Teach yourself how to be cool with being uncomfortable

Thank You!

- Questions?
- Comments?
- Suggestions?
 - sgleisle@brockport.edu

Twitter: @Ctr4SR

Facebook.com/BrockportHealth

Blog: Makinghealthcontagious.com